

# ARMORY



The Armory was the most expensive building in Minnesota at one time. The building was designed by St. Paul Architect P.C. Bettenburg, who was also a major in the Minnesota National Guard. From the late 1930s through the 1970s, it was a venue for civic events, including concerts, political conventions and sporting events.

The building was used by the Minneapolis Lakers as a part-time home between 1947-1959, and as its primary home court for the 1959-1960 NBA season.

As of early 2018, the Minneapolis Armory is poised to make a triumphant return. The venue has returned to its roots - being the host to a number of social functions: concerts, sporting events, trade shows, and other private celebrations.



## CONCERTS



## SPORTING EVENTS



## CELEBRATIONS



## TRADE SHOWS

# ARMORY

500 SOUTH 6TH ST., MINNEAPOLIS, MN 55415  
WWW.ARMORYMN.COM

## ARMORY CONTACTS:

Andy Warg  
VP of Entertainment  
612-240-7397  
andy@armorymn.com

Gabe Nielsen  
Operations Director  
*Primary Advance Contact*  
952-224-6918  
gabe@armorymn.com

Andrew Ellis  
Merchandise Manager  
763-232-1151  
awellis24@gmail.com

Lynne Nelson  
Box Office Manager  
612.240.7397  
lynne@armorymn.com

Cole Timko  
Marketing Director  
952-334-4616  
cole@armorymn.com

Jason Jones  
VP of Hospitality  
612-702-0970  
jason@armorymn.com

## ARMORY CONCERT (BACKSTAGE) CATERING:

Victoria Wolf - Backstage Catering MSP  
612.499.0889  
vic@backstagemsp.com

## ENTOURAGE EVENTS GROUP CONTACTS:

Entourage Events Group | edgPRODUCTIONS |  
Elite Catering | Armory  
EntourageEventsGroup.com

ENTOURAGE  
EVENTS GROUP

STEVE HARK - FOUNDER / CEO  
(612) 444-3211  
Steve@EntourageEventsGroup.com

MICHELE KRAUSS - SENIOR PLANNER  
(612) 445-7061  
Michele@EntourageEventsGroup.com

## TECHNICAL PRODUCTION CONTACTS:

www.allied.productions  
Matt James -  
Production Manager  
of Entertainment  
507-271-5985  
matt.james@allied.productions



## RIGGING CONTACT:

www.tcrigging.com  
Christian Rouelle - Vice President  
860-748-1170  
christian@tcrigging.com



## LABOR CONTACT:

Alex Domagall  
651-500-2372  
americanhorselabor@gmail.com

## GAS CONTACT:

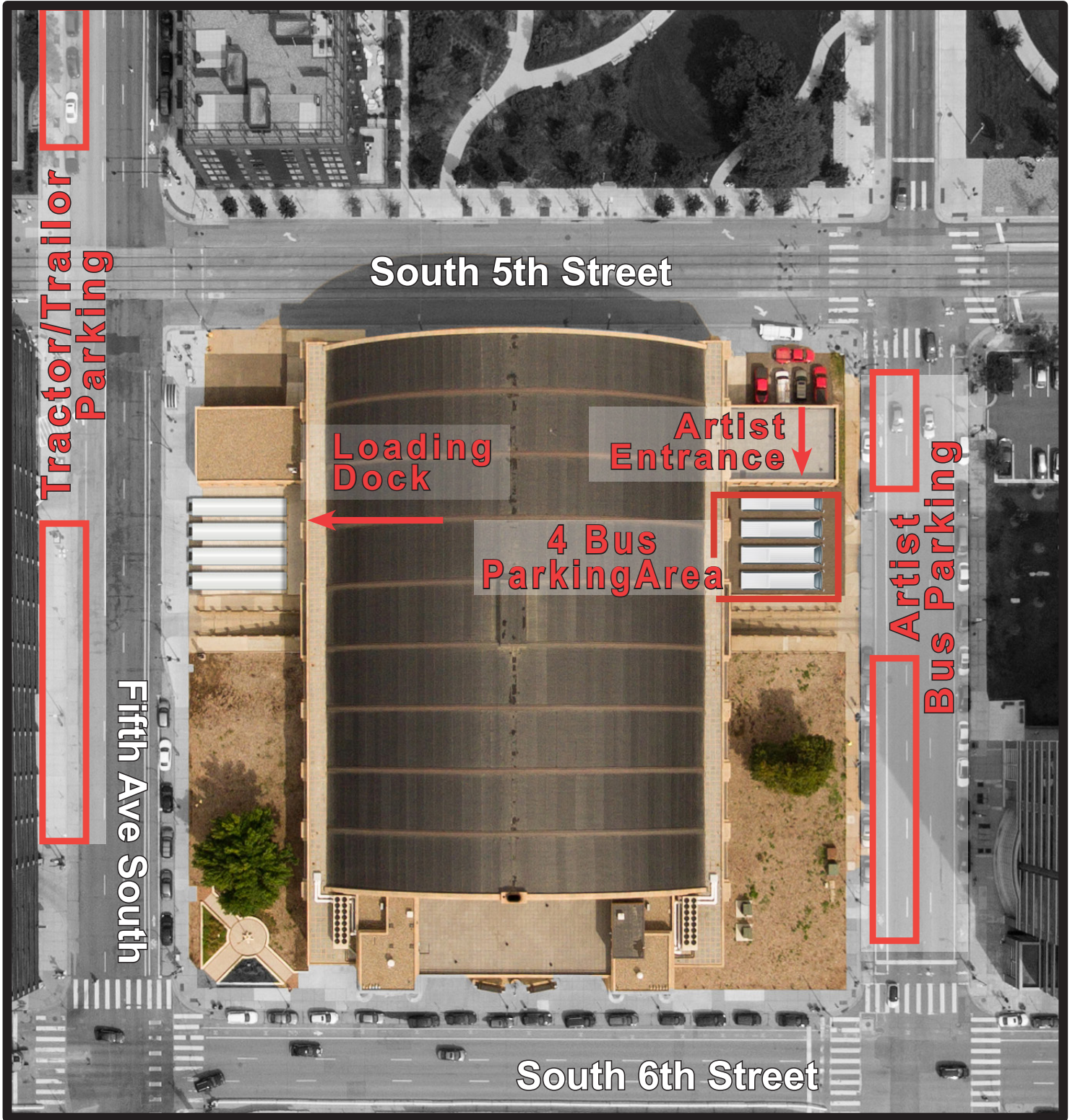
Josh Coccoluto  
Specialty Gas Inside Sales | Toll Company  
763-551-5342  
joshc@tollgas.com

## FORKLIFT CONTACT:

Nick Schubert  
Rental Manager | Forklifts of Minnesota  
952-887-5418 | www.forkliftsofmin.com



# PARKING MAP



# GOOGLE LOCATION MAP/DIRECTIONS

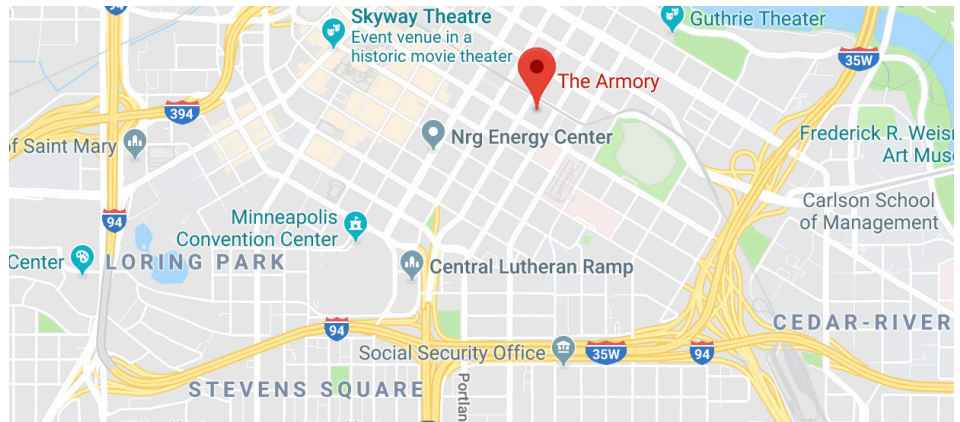
**The Armory**  
500 South 6th St,  
Minneapolis, MN 55415

## From the North

Head southeast on I-94 E  
Use the right 2 lanes to take  
exit 230 for 4th St N  
Continue onto N 4th St  
Turn right onto S 4th Ave  
Turn left onto South 6th St  
Destination will be on the left

## From the South

Head north on I-35W N  
Keep right at the fork to stay  
on I-35W N  
Use the middle lane to take  
exit 17C for 3rd St toward U of M  
West Bank  
Keep left, follow signs for 3rd St  
Continue onto S 3rd St  
Turn left onto S 4th Ave  
Turn left onto South 6th St  
Destination will be on the left



## From the East

Head southwest on I-35E S  
Keep right at the fork to continue  
on I-94 W, follow signs for  
Minneapolis  
Take exit 234B for 7th St  
toward Hospital  
Slight right onto S 7th St  
Turn right onto S 5th Ave/  
Fifth Ave S  
Turn right onto South 6th St  
Destination will be on the left

## From the West

Head east on I-394 E  
Keep left to stay on I-394 E  
Use the right lane to take exit 9B  
toward Ramp B  
Use the right lane to take the  
Ramp C ramp  
Continue onto N 6th St  
Destination will be on the left

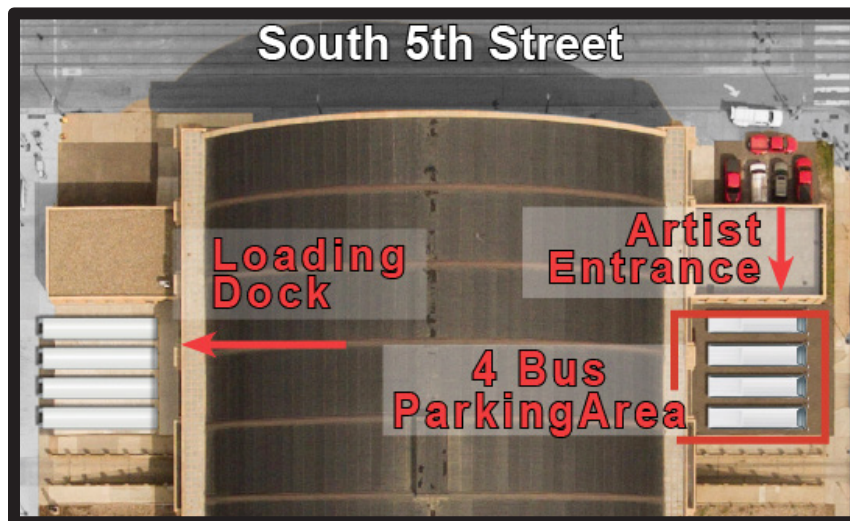
# HOSPITALS

Hennepin County Medical Center  
701 Park Ave, Minneapolis, MN 55415  
(Level 1 Trauma Center)

Abbott Northwestern Hospital  
800 E 28th St, Minneapolis, MN 55407

# BUS LOT

- 4- Shore Power Receptacles 125/208volt, 50 amp Nema 14-50





# LOADING DOCK & GUIDELINES

**LOCATION** - 5th Ave S, between South 6th S and South 5th St

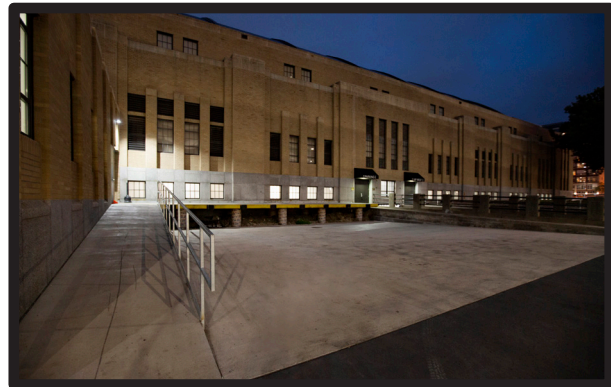
**DOCK SIZE** - Outdoor Loading Dock 49'8" X 10'11"

**NOTES:** • **Police officer must be scheduled for load in and load out for traffic control. Trucks will not be allowed in or out without this and will be fined!**

- Tractors must disconnect from trailers and park at hooded meters
- Loading dock is not covered from elements
- Dock plates are available for use
- 4 Trailer maximum



Loading Dock Door Size - 10' X 9'



Loading Dock Entrance

## RAMP AREA

Once you unload and enter the building you will encounter two concrete inclines before approaching the stage right area.

Top of Ramp has a Height clearance of 102"

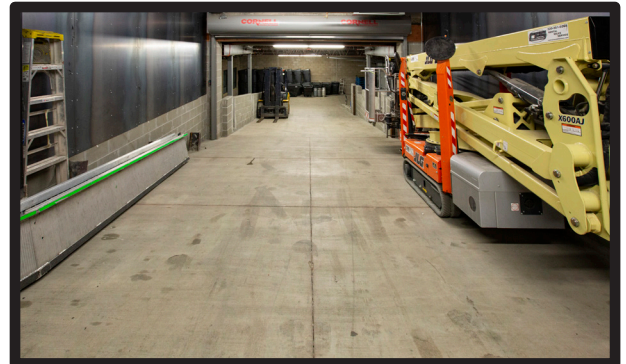
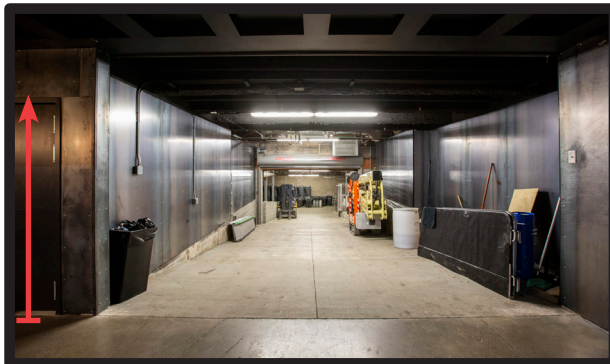
1st incline - 34' long x 10' wide - 3.8° Grade

2nd incline\* - 73' long x 13'-15' wide - 8° Grade (7' rise over a 73' long ramp)

\* This is going to be a steeper climb than you may think.

Our suggestion is to add 4 extra hands depending on requirements.

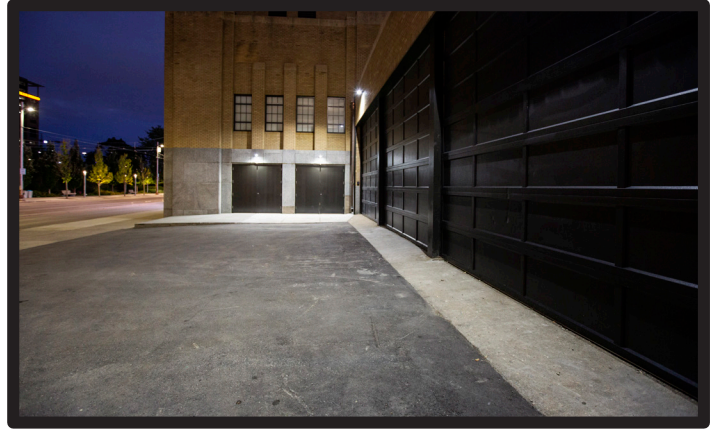
102"  
Clearance



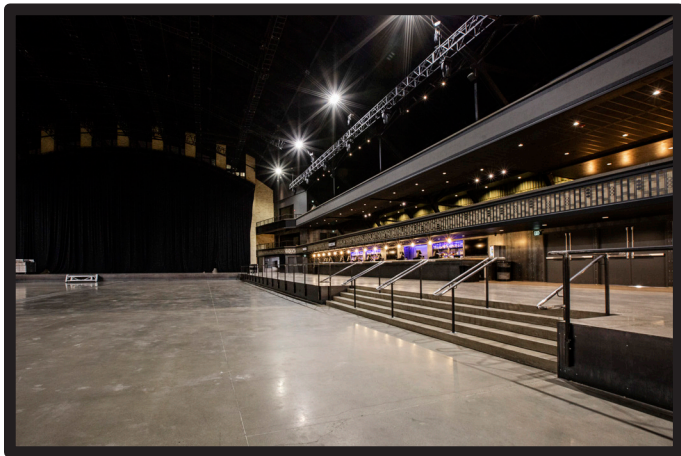


# SECONDARY LOADING DOCK

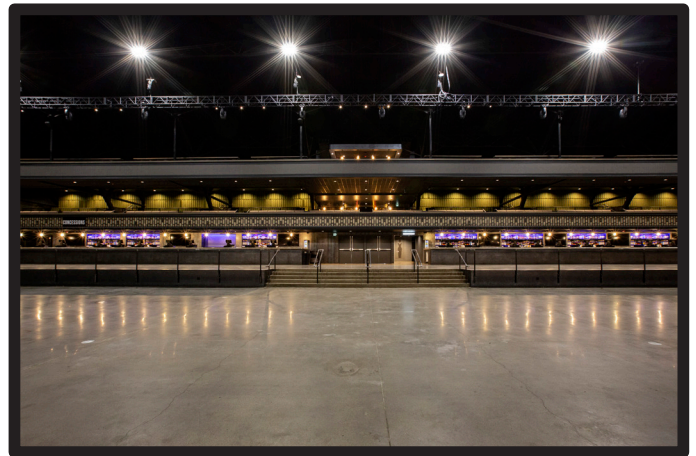
16' wide x 10' high \*ONLY ACCESS FOR 24' TRUCKS - Qty 1



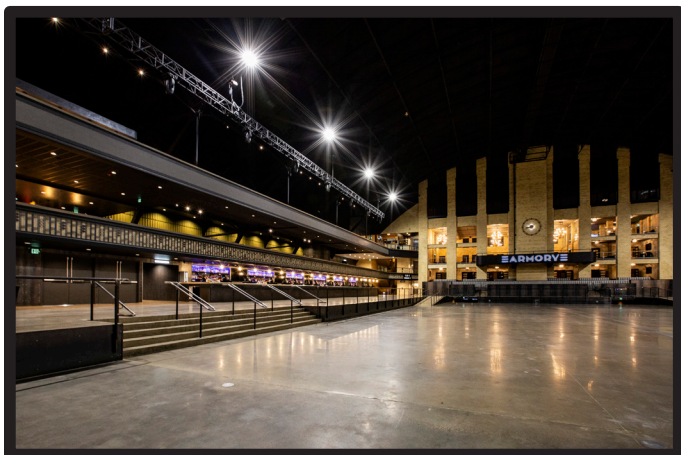
# THE ARMORY – AT A GLANCE



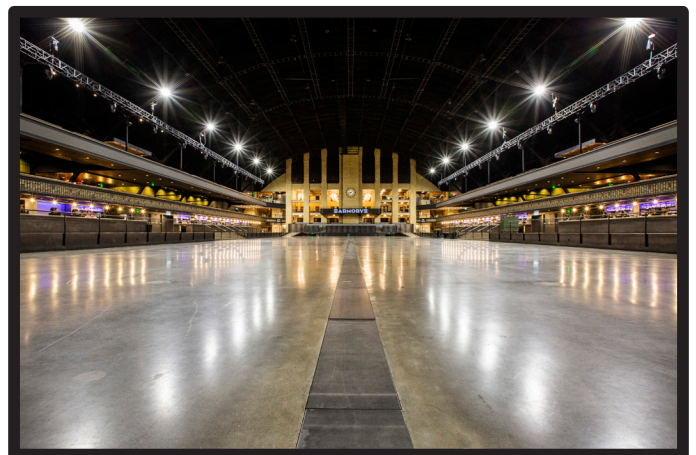
Main Floor - Tier 1



Main Floor - Tier 2



Lower Bowl



Lower Bowl View



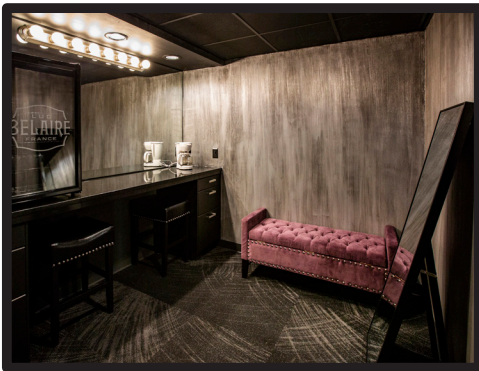
# DRESSING ROOMS

QUANTITY: 4

LOCATION - 2nd Floor Stage Right (24' x 19')  
2nd Floor Stage Left (24' x 19')  
3rd Floor Stage Right (20' x 17')  
3rd Floor Stage Left (20' x 17')

AMENITIES -

8x8 Vanity Area, Shower with private bath, Sofa's, 65" TV, Balcony overlooking the stage.



# PRODUCTION OFFICES / CATERING ROOMS

QUANTITY: 3

LOCATION-

Lower Level Stage Left A (15' x 12')  
Lower Level Stage Left B (15' x 12')  
Lower Level Stage Left C (15' x 12')  
Production Office Common Area (Brown Couch Room 25' x 17')  
*(unsecure/no restrooms)*

Catering Room - Lower Level Stage Left (35' x 35')

AMENITIES- Hardwired; Wireless Internet, Private Restrooms with Showers  
Production Network Internet Name: Production (see password note in room)

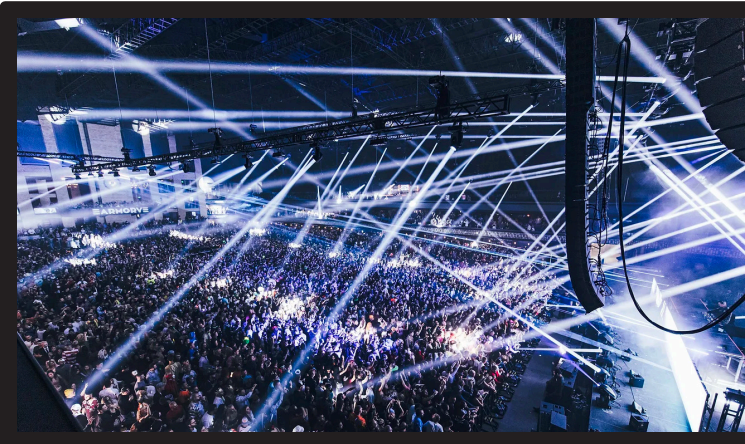


# RENTALS AVAILABLE



## AUDIO\*

L-Acoustics  
Avid  
Digico  
Shure  
Yamaha



## LIGHTING\*

Ayrton  
Martin  
Chauvet  
Grand MA  
Vari-Lite  
Clay Paky  
Astera  
Chroma Q  
Lycian  
Elation

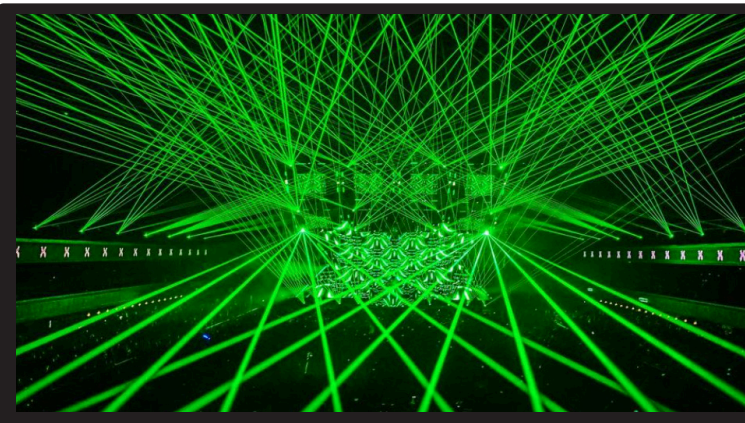


## VIDEO\*

Christi Spyder  
For A  
Barco  
Ross  
Sony

## LED WALL\*

ArtFox  
Gloshine  
Light Link  
Novastar



## SPECIAL EFFECTS\*

Chryo  
Confetti  
Laser  
Pyro  
and more....

MORE ITEMS AVAILABLE UPON REQUEST \*



# HOUSE EQUIPMENT

## Staging - sizes for rental to suit any client needs

140 - staging dimensions 4' x 8' decks  
 33 - Frames  
 20 - 8' handrail  
 8 - 4' handrail  
 3 - 8' (7 step) stair cases with handrail  
 3 - 5' (4 step) stair cases with hand rail  
 2 - 1' step  
 60 - 6"-8" legs  
 52 - 10"-12" legs  
 34 -14"-16" legs  
 200 - 22"-24" Legs

22 - single peg rolling riser wheels  
 13 - dual peg rolling riser wheels  
 6 - 3' x 25' stage skirt  
 UPSTAGE DRAPE

## Barricade - All Steel

18 - 4' Staging Concepts  
 Mojo Style  
 2 - Staging Concepts  
 Mojo Style  
 Inside 90° Corner  
 2 - Staging Concepts  
 Mojo Style  
 Outside 90° Corner  
 6 - 4' Stageright  
 Mojo Style (FOH)

# SCREEN RESOLUTIONS

## 6TH STREET OUTSIDE FRONT BOARDS

800 x 320  
 .JPG file made at 300dpi

## 5TH STREET OUTSIDE BACK BOARDS

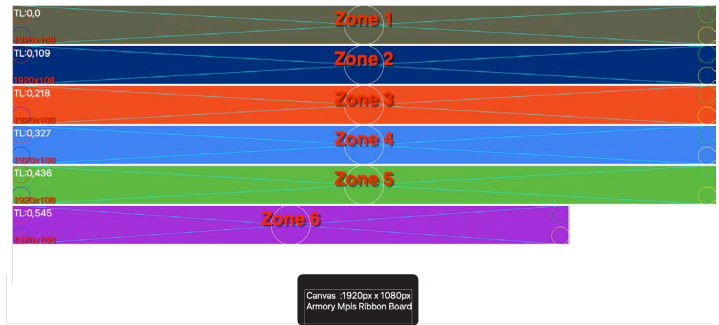
480 x 240  
 .JPG file made at 300dpi

## INTERIOR TVS RES

3840 x 2160 (1920 X 1080 will work if needed)  
 .JPG file made at 300dpi

## INTERIOR RIBBON BOARDS

11108px X 108px (Actual)  
 Still Graphics .jpg Motion Graphics .MOV file  
 SDI Input available



# ELECTRICAL

## STAGE Right POWER:

[All CAM CONNECTIONS with  
 Ground and Neutral Straight]

- 1- 400amp 3phase 208
- 1- 200amp 3phase 208
- 1- 200amp 3phase 208 [ISOLATED]

## STAGE Left POWER:

[All CAM CONNECTIONS with  
 Ground and Neutral Straight]

- 1- 400amp 3phase 208
- 1- 200amp 3phase 208
- 1- 200amp 3phase 208 [ISOLATED]

## Power Distances

- Full House 100'
- 3/4 house 125'
- 2/3 house 150'

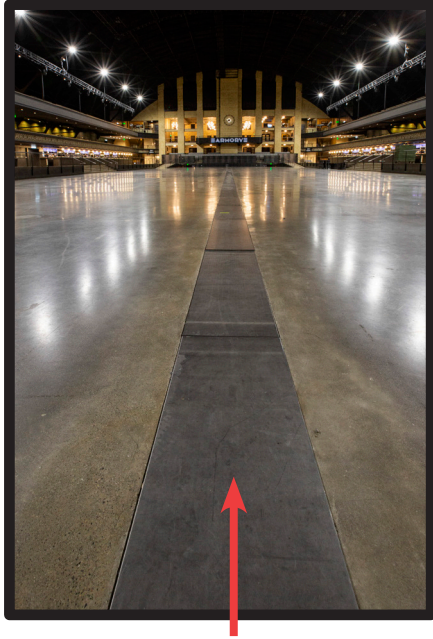


Feeder Pass Through  
 to Electrical Service



Power Cam Out

## FOH CABLE TROUGH



Removable Steel Plates  
**DO NOT DRIVE LIFT OVER**

## HEAVY MACHINERY

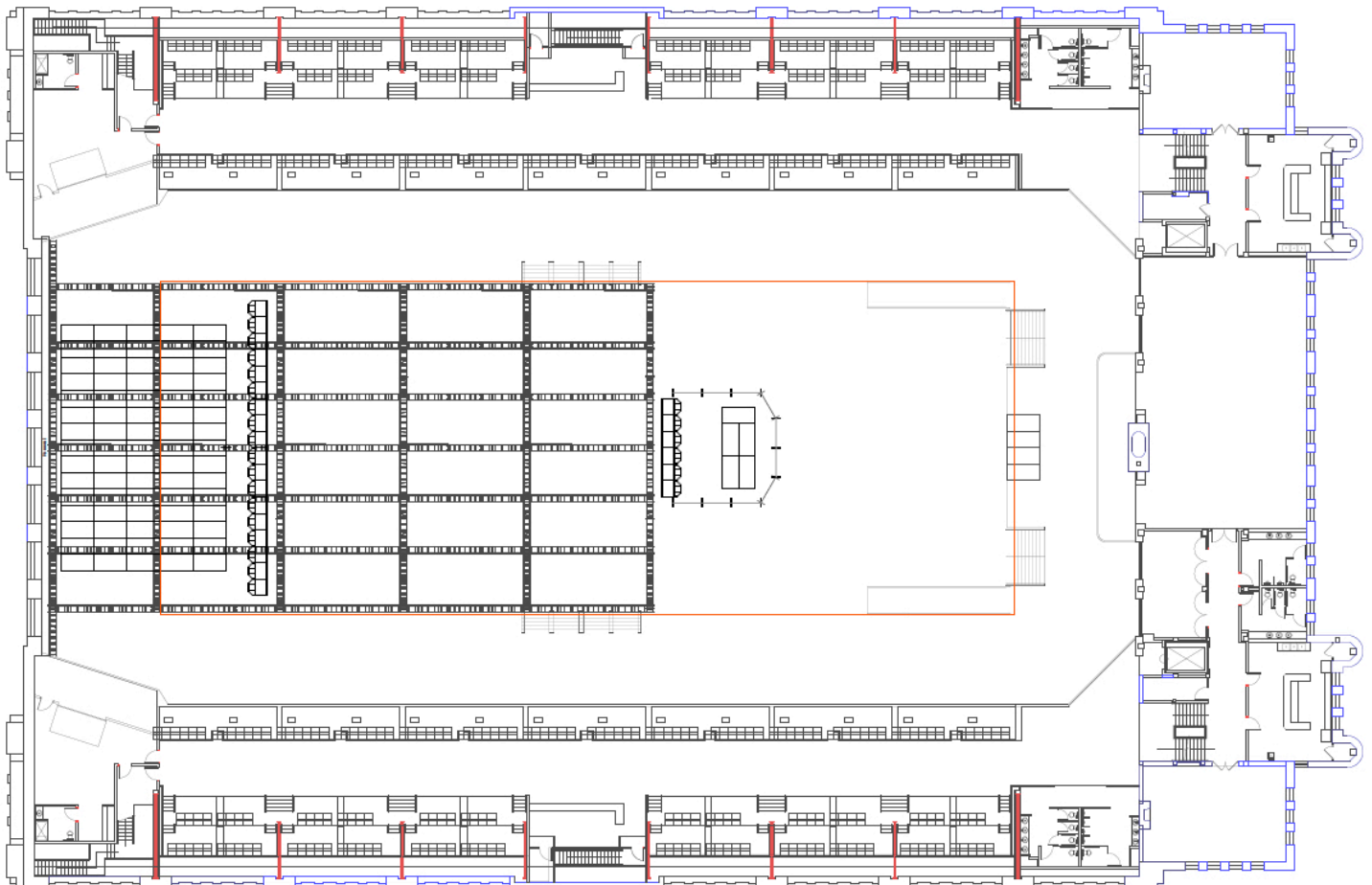
- 1 - 60' lift \* must be operated by in house rigging provider
- 1 - pallet jack
- 1 - 5000 lb fork lift

## MISC

- 10 - pieces of bike rack no cover
- 40 - bike rack with covers
- 220' - P&D
- 150 - padded Chairs
- 25 - 6' tables
- 10 - 8' tables
- 50 - stantions
- 3000 - banquet chairs
- 12 - 8' bars

## FULL HOUSE (diagram) 60' x 40'

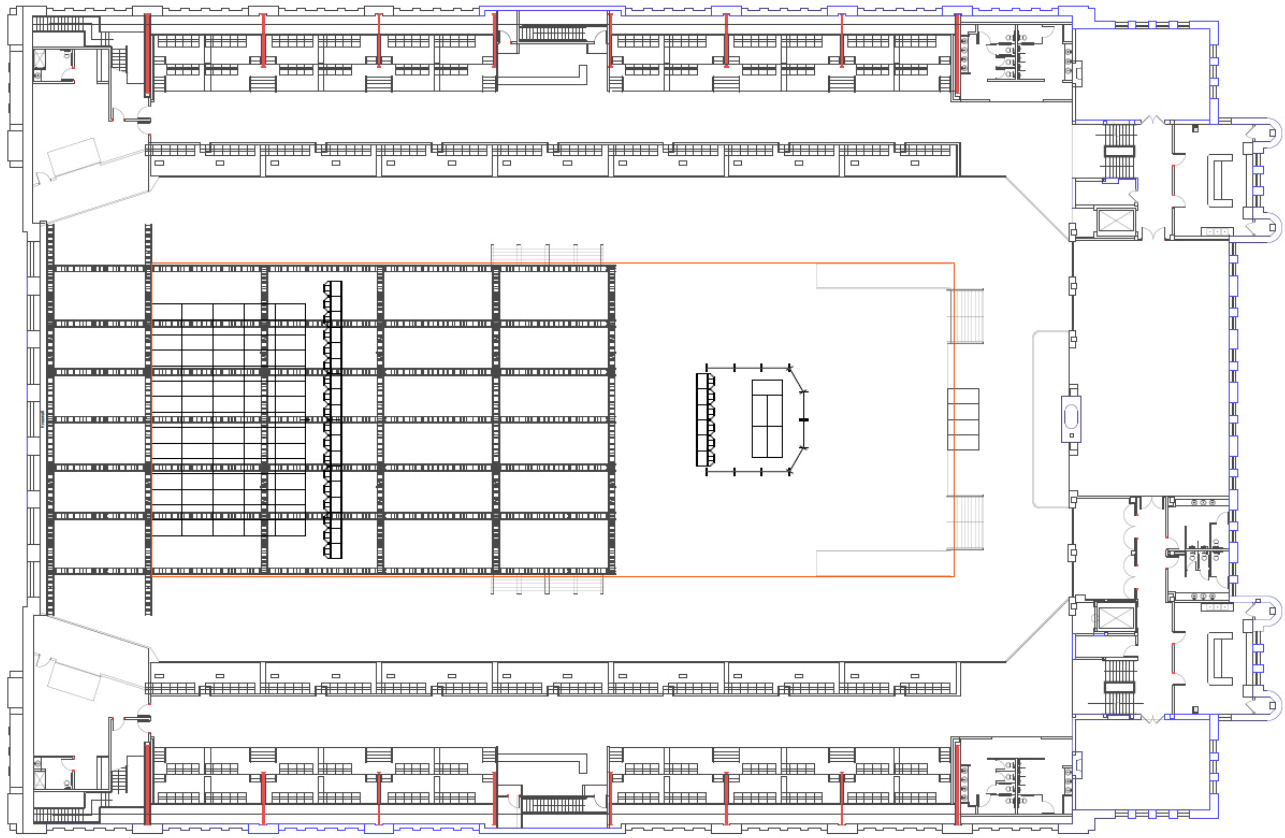
DRAWINGS AND MEASUREMENTS  
AVAILABLE UPON REQUEST.





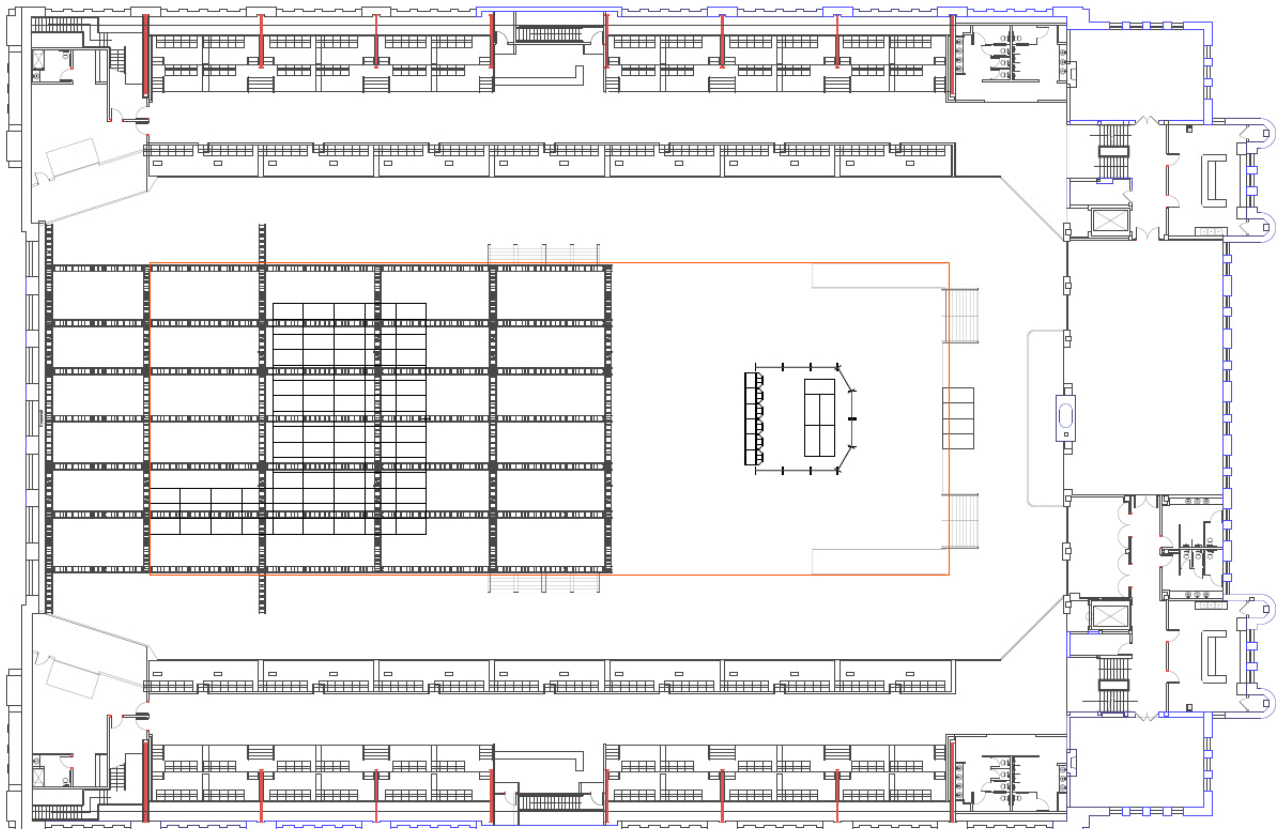
# 3/4 HOUSE (diagram) 60' x 40'

DRAWINGS AND MEASUREMENTS  
AVAILABLE UPON REQUEST.



# 2/3 HOUSE (diagram) 60' x 40'

DRAWINGS AND MEASUREMENTS  
AVAILABLE UPON REQUEST.

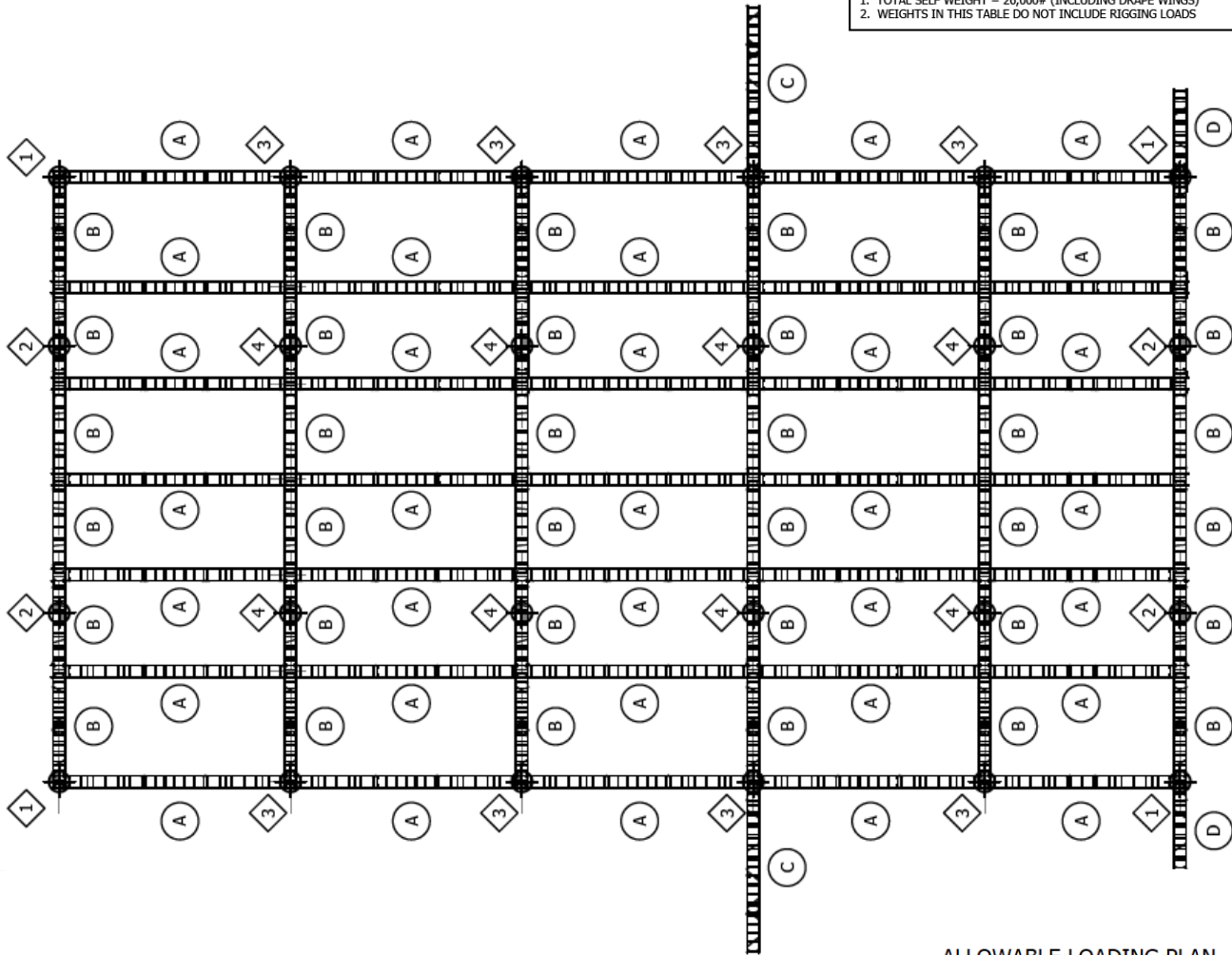


# RIGGING

Center Bowl - 69' high steel / 63' low steel  
 edge of the bowl - 63' High steel / 52' low steel  
 next to balcony on upper bowl - 52' High steel / 44' low steel

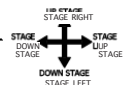
SELF WEIGHT REACTIONS		
MARK	WITHOUT DRAPE WING	WITH DRAPE WING
①	320#	720#
②	870#	870#
③	545#	945#
④	1,515#	1,515#

1. TOTAL SELF WEIGHT = 26,000# (INCLUDING DRAPE WINGS)  
 2. WEIGHTS IN THIS TABLE DO NOT INCLUDE RIGGING LOADS



## ALLOWABLE LOADING PLAN

1/16" = 1'-0"



⊕ INDICATES TRUSS HANGER LOCATION. OVERALL LOAD SHALL NOT EXCEED 4,000# (INCLUDING SELF WEIGHT OF TRUSS)

## ALLOWABLE LOADING GUIDELINES

- EACH LOAD CASE INDICATED IN THE TABLE IS INDEPENDENT OF THE OTHER LOADS. MULTIPLE LOAD CASES MAY NOT BE APPLIED SIMULTANEOUSLY TO THE SAME TRUSS.
- CARE SHOULD BE TAKEN WHEN APPLYING LOADS AS LOADING OF ONE TRUSS MAY INDUCE LOAD ON ANOTHER TRUSS RESULTING IN AN OVERLOAD SITUATION.
- THE UNIFORMLY DISTRIBUTED LOAD IS ONLY APPLICABLE IF THE LOAD IS APPLIED EVENLY OVER THE ENTIRE LENGTH OF THE TRUSS.
- SELFWEIGHT OF THE TRUSS HAS BEEN INCLUDED IN THE CALCULATION OF THE ALLOWABLE LOADS.
- ALL LOADS SHALL BE APPLIED AT TRUSS PANEL POINTS ONLY, I.E. INTERSECTION OF DIAGONAL AND CHORD OR VERTICAL AND CHORD.
- BRIDLES ARE NOT PERMITTED UNLESS APPROVED IN WRITING BY THE ENGINEER OF RECORD.
- ALLOWABLE LOADS INDICATED ARE FOR GENERAL GUIDANCE ONLY. ALL RIGGING PLOTS SHOULD BE EVALUATED BY A LICENSED STRUCTURAL ENGINEER PRIOR TO HANGING ANY RIGGING LOADS.
- NO DYNAMIC OR SHOCK LOADS HAVE BEEN TAKEN INTO ACCOUNT.
- RIGGING LOAD SHALL NOT EXCEED 4,000# AT EACH TRUSS HANGER (INCLUDING SELF WEIGHT)
- MAXIMUM OVERALL RIGGING LOAD SHALL NOT EXCEED 96,000# - 26,000# SELF WEIGHT = 70,000#
- BUILDING EOR TO VERIFY LOADING CRITERIA IS STRUCTURAL ACCEPTABLE WITHIN THE FOOTPRINT OF THE BUILDING

## ALLOWABLE TRUSS CAPACITY

TRUSS SPAN	UNIFORMLY DISTRIBUTED LOAD	CENTER POINT LOAD	THIRD POINT LOAD	QUARTER POINT LOAD
A	350 PLF	5,000#	3,600#	2,800#
B	1,400 PLF	8,000#	5,000#	4,000#
C	155 PLF	-	-	-
D	350 PLF	-	-	-

NOTE: ALLOWABLE LOADING OF TRUSS WILL BE GOVERNED BY RIGGING LOAD AT EACH TRUSS HANGER AND SHALL NOT EXCEED 4,000# (INCLUDING SELF WEIGHT OF TRUSS)



