

# ≡ARMORY≡



The Armory was the most expensive building in Minnesota at one time. The building was designed by St. Paul Architect P.C. Bettenburg, who was also a major in the Minnesota National Guard. From the late 1930s through the 1970s, it was a venue for civic events, including concerts, political conventions and sporting events.

The building was used by the Minneapolis Lakers as a part-time home between 1947-1959, and as its primary home court for the 1959-1960 NBA season.

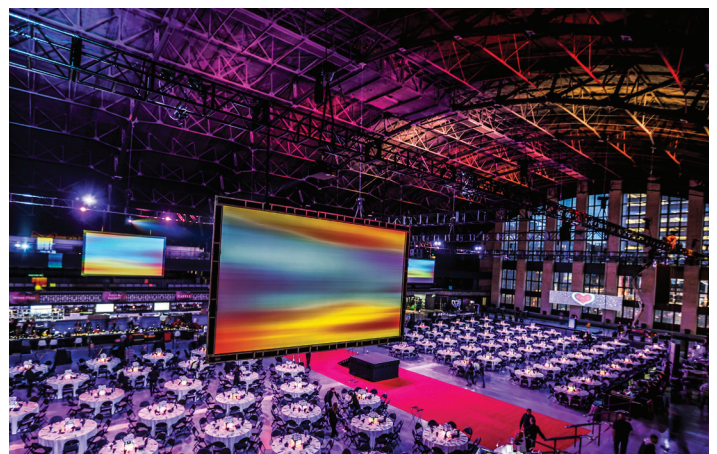
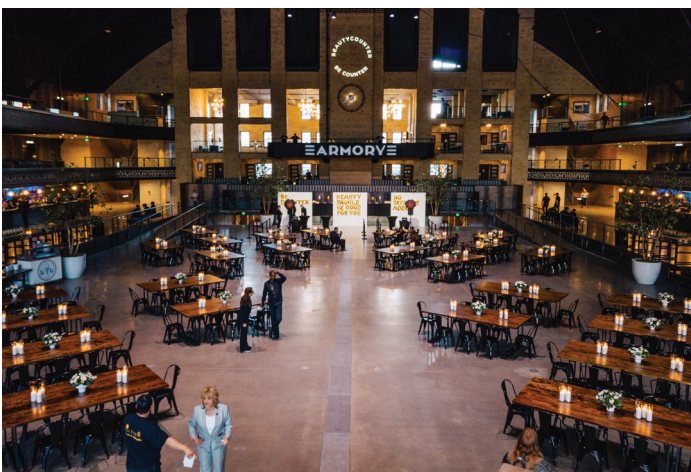
As of early 2018, the Minneapolis Armory is poised to make a triumphant return. The venue has returned to its roots - being the host to a number of social functions: concerts, sporting events, trade shows, and other private celebrations.

## — Concerts —



## — Sporting Events —

## — Trade Shows —



## — Celebrations —

# ARMORY

500 South 6th St., Minneapolis, MN 55415

[www.ArmoryMN.com](http://www.ArmoryMN.com)

## ARMORY CONTACTS:

Rich Richardson  
VP of Operations  
678-478-7966  
[rich@armorymn.com](mailto:rich@armorymn.com)

Andy Warg  
VP of Entertainment  
612-240-7397  
[andy@armorymn.com](mailto:andy@armorymn.com)

Gabe Nielsen  
Operations Director  
952-224-6918  
[gabe@armorymn.com](mailto:gabe@armorymn.com)

Jason Jones  
VP of Hospitality  
612-702-0970  
[jason@armorymn.com](mailto:jason@armorymn.com)

Cole Timko  
Marketing Director  
952-334-4616  
[cole@armorymn.com](mailto:cole@armorymn.com)

Lynne Nelson  
Box Office Manager  
612.240.7397  
[lynne@armorymn.com](mailto:lynne@armorymn.com)

Andrew Ellis  
Merchandise Manager  
763-232-1151  
[awellis24@gmail.com](mailto:awellis24@gmail.com)

## ARMORY CONCERT (BACKSTAGE) CATERING:

Victoria Wolf - Backstage Catering MSP  
612.499.0889  
[vic@backstagemsp.com](mailto:vic@backstagemsp.com)

## ENTOURAGE EVENTS GROUP CONTACTS:

Entourage Events Group | [edgPRODUCTIONS](http://edgPRODUCTIONS.com) |  
Elite Catering | Armory  
[EntourageEventsGroup.com](http://EntourageEventsGroup.com)

ENTOURAGE  
EVENTS GROUP

STEVE HARK - FOUNDER / CEO  
(612) 444-3211  
[Steve@EntourageEventsGroup.com](mailto:Steve@EntourageEventsGroup.com)

Nancy Jacobs - Director of Sales And Marketing  
612-386-8755  
[nancy@entourageeventsgroup.com](mailto:nancy@entourageeventsgroup.com)

## TECHNICAL PRODUCTION CONTACTS:

[www.allied.productions](http://www.allied.productions)

Chad Pechacek - President  
651-343-5542  
[chad@allied.productions](mailto:chad@allied.productions)



Jim Loveland - General Manager of Production  
952-240-7359  
[jim@allied.productions](mailto:jim@allied.productions)

## RIGGING CONTACT:

[www.tcrigging.com](http://www.tcrigging.com)



Christian Rouelle - Vice President  
860-748-1170  
[christian@tcrigging.com](mailto:christian@tcrigging.com)

## LABOR CONTACT:

Alex Domagall  
651-500-2372  
[alexdomagall@gmail.com](mailto:alexdomagall@gmail.com)



# LOADING DOCK & GUIDELINES

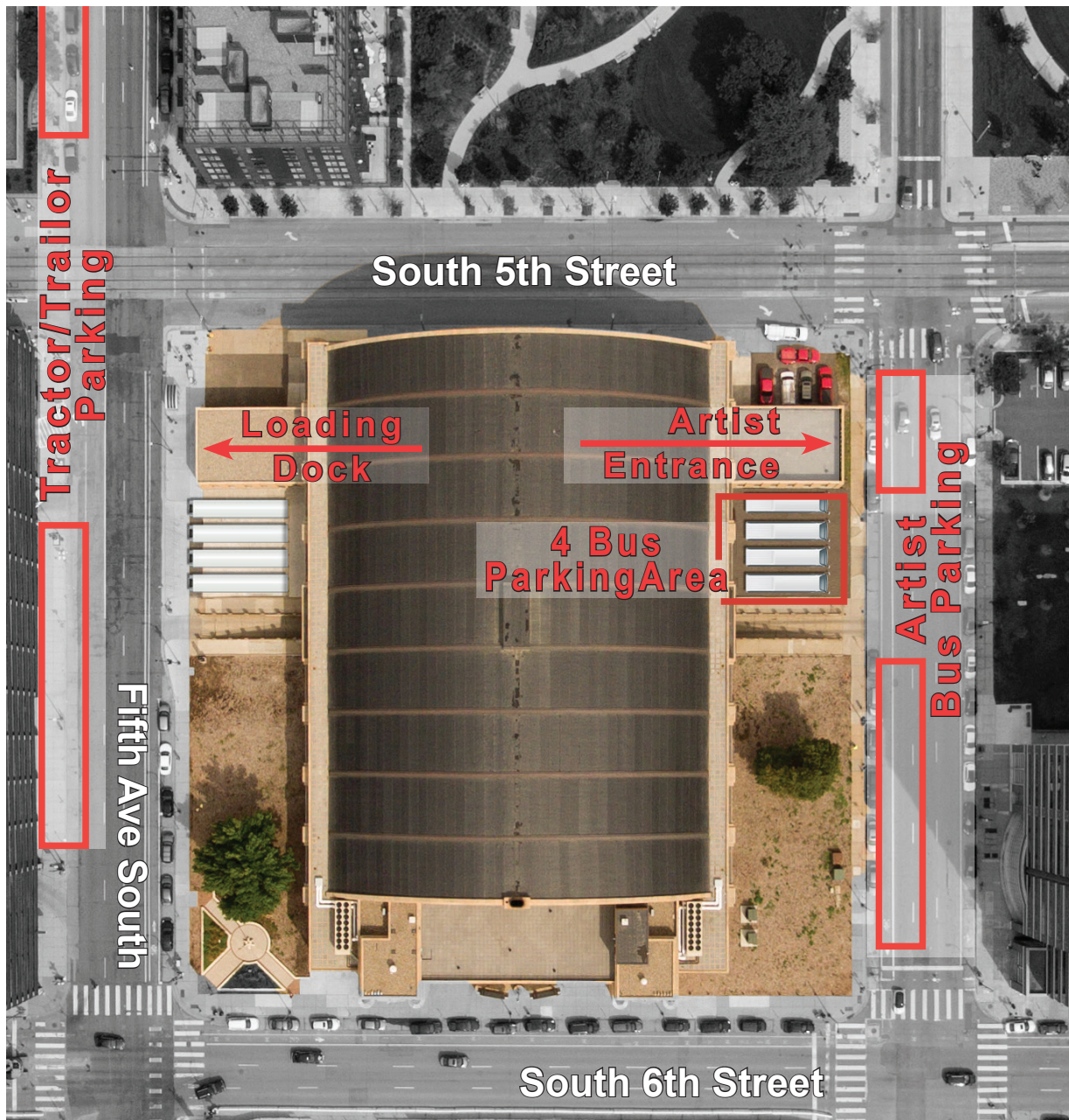
**LOCATION** - 5th Ave S, between South 6th S and South 5th St

**DOCK SIZE** - Outdoor Loading Dock 49'8" X 10'11"

**DOCK DOOR SIZE** - 10' X 9'

**NOTES:** • **Police officer must be scheduled for load in and load out for traffic control. Trucks will not be allowed in or out without this and will be fined!**

- Tractors must disconnect from trailers and park at hooded meters.
- Loading dock is not covered from elements.
- Dock plates are available for use.
- Split ramp available.
- 4 Trailer maximum.



# GOOGLE LOCATION MAP/DIRECTIONS

**The Armory**  
**500 South 6th St,**  
**Minneapolis, MN 55415**

## From the North

Head southeast on I-94 E  
Use the right 2 lanes to take  
exit 230 for 4th St N  
Continue onto N 4th St  
Turn right onto S 4th Ave  
Turn left onto South 6th St  
Destination will be on the left



## From the South

Head north on I-35W N  
Keep right at the fork to stay  
on I-35W N  
Use the middle lane to take  
exit 17C for 3rd St toward U of M  
West Bank  
Keep left, follow signs for 3rd St  
Continue onto S 3rd St  
Turn left onto S 4th Ave  
Turn left onto South 6th St  
Destination will be on the left

## From the East

Head southwest on I-35E S  
Keep right at the fork to continue  
on I-94 W, follow signs for  
Minneapolis  
Take exit 234B for 7th St  
toward Hospital  
Slight right onto S 7th St  
Turn right onto S 5th Ave/  
Fifth Ave S  
Turn right onto South 6th St  
Destination will be on the left

## From the West

Head east on I-394 E  
Keep left to stay on I-394 E  
Use the right lane to take exit 9B  
toward Ramp B  
Use the right lane to take the  
Ramp C ramp  
Continue onto N 6th St  
Destination will be on the left

## HOTELS

Venue partner hotels close to venue:

Preferred rates available, please contact [stephen@ArmoryMN.com](mailto:stephen@ArmoryMN.com) and we can solicit quotes on your behalf.

Radisson Red Minneapolis Downtown  
(one block away)  
[www.radissonred.com/minneapolis](http://www.radissonred.com/minneapolis)  
Address: 609 S 3rd Street  
Minneapolis, MN 55415

Loews Minneapolis  
[www.loewshotels.com/minneapolis-hotel](http://www.loewshotels.com/minneapolis-hotel)  
Address: 601 1st Avenue North,  
Minneapolis, Minnesota, 55403

## HOSPITALS

Hennepin County Medical Center  
701 Park Ave, Minneapolis, MN 55415  
(Level 1 Trauma Center)

## MUSIC STORES

Electric Fetus  
2000 S 4th Ave, Minneapolis, MN 55404

W Minneapolis  
[www.wminneapolishotel.com](http://www.wminneapolishotel.com)  
Address: 821 Marquette Avenue,  
Minneapolis, MN, 55402

Elliot Park Hotel, Autograph Collection  
823 Fifth Ave S, Minneapolis, MN 55404

Boutique: Hewing Hotel Minneapolis  
[www.hewinghotel.com](http://www.hewinghotel.com)  
Address: 300 Washing Avenue N  
Minneapolis, MN 55401

Abbott Northwestern Hospital  
800 E 28th St, Minneapolis, MN 55407

Guitar Center  
1641 County Road B2 W, Roseville, MN 55113



# GROCERY STORES

Lunds & Byerlys Northeast Minneapolis,  
25 University Ave SE, Minneapolis, MN 55414

New Mart Skyway Store, 331 2nd Ave S #200,  
Minneapolis, MN 55401

Trader Joe's, 721 S Washington Ave,  
Minneapolis, MN 55415

The Wedge, 2105 Lyndale Ave S.  
Minneapolis, MN 55405

East Village Market, 1431 11th Ave S,  
Minneapolis, MN 55404

## COFFEE SHOPS

Blackeye Roasting Co.  
Cafe Patteen  
Corner Coffee  
Dunn Brothers  
In The Loop Co.  
Peace Coffee  
Starbucks

## SEA FOOD

Bar Lagrassa  
Cafe Lurcat  
Oceanacre  
Sea Change  
Smackshack  
Stella's  
The Anchor  
The Lowry

## BURGERS

A58 Club - South Mpls  
Blue Door Pub - St. Paul & Mpls  
Matt's Bar - South Mpls  
The Nook - St. Paul

## MEXICAN

El Taco Riendo - NE Mpls  
Maya - NE Mpls  
Ocampos - South Mpls  
Taqueria La Hacienda - South Mpls

## SUSHI

Fuji Ya  
Kiku Bistro  
Masu  
Origami  
Wakami  
Wasabi

## PIZZA

Black Sheep - Downtown  
Cossetta's - St. Paul  
Mama's - St. Paul  
Pizza Lola - South Mpls  
Pizza Luce - Downtown  
Psycho Suzies - NE Mpls  
Punch Pizza - NE Mpls  
Red Savoy's - NE Mpls  
Young Joni - NE Mpls

## RAMEN

Kazama  
Masu  
Moto - I  
Zen Box - Also Sushi

## EXCELLENT CASUAL

Betty Danger's - NE Mpls  
Borough - Parlour - Downtown  
Brassa  
Broder's  
Butcher & The Boar  
Cheno Latino - Uptown Mpls  
Eat Street Social  
Eli's  
Hells Kitchen  
Hi - Lo Diner  
Hola Arepa  
Ice House - Uptown  
Loring Pasta Bar  
Lu's Sandwiches  
Nightengale  
Red Cow  
Red Rabbit  
Revival - Southern Food - South Mpls  
Sample Room - NE Mpls  
Stanley's - NE Mpls  
The Draft House - NE Mpls  
The Kenwood

## DIVE BARS

1029 Bar  
CC Club  
Cuzzy's  
Legends  
Liquor Lyles  
Northeast Place  
Terminal Bar  
The Front  
The Otter  
Tony Jaro's  
Vegas Lounge  
Yacht Club

## COCKTAILS

Eli's  
Ike's  
Marvel Bar  
Monte Carlo  
Nye's  
Parlour  
Prohibition  
Tattersall

# LOADING DOCK



Loading Dock Door



Loading Dock Entrance



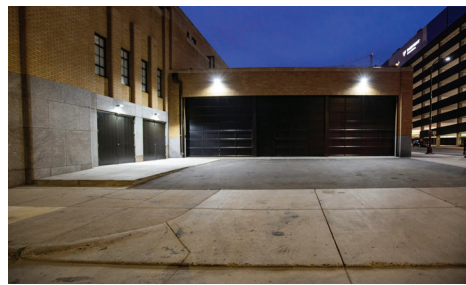
Loading Dock Entrance

## ADDITIONAL LOADING DOCKS

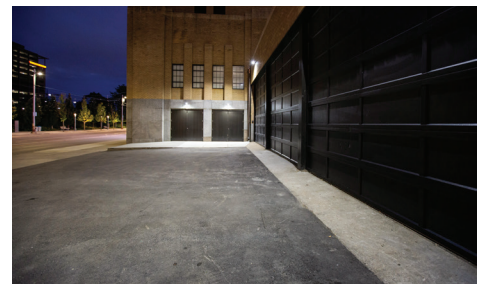
3 - 16' wide x 10' high \*ONLY ACCESS FOR 24' TRUCKS



Additional Loading Dock



Additional Loading Dock



Additional Loading Dock

# RAMP AREA

Once you unload and enter the building you will encounter two concrete inclines before approaching the stage right area.

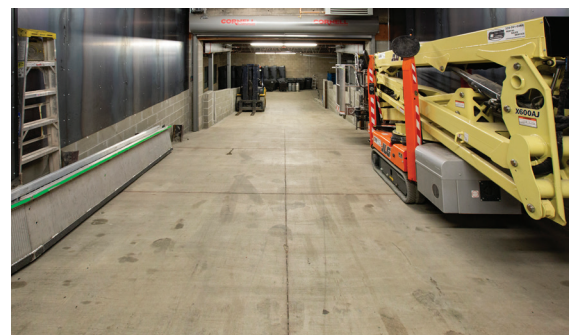
Top of Ramp has a 90" height clearance - 103" if advanced prior to the event

1st incline - 34' long x 10' wide - 3.8° Grade

2nd incline\* - 73' long x 13'-15' wide - 8° Grade (7' rise over a 73' long ramp)

*\* This is going to be a steeper climb than you may think. Our suggestion is to add 4 extra hands depending on requirements.*

90"  
Clearance





# DRESSING ROOMS

QUANTITY: 6

LOCATION- Lower Level Stage Left (A) (15' x 12')

Lower Level Stage Left (B) (15' x 12')

2nd Floor Stage Right (24' x 19')

2nd Floor Stage Left (24' x 19')

3rd Floor Stage Right (20' x 17')

3rd Floor Stage Left (20' x 17')

AMENITIES- 8x8 Vanity Area, Shower with private bath, Sofa's 65" TV,  
Balcony overlooking the stage.

*NOTE- To access these you must go through the production office.*





# PRODUCTION,CATERING & CREW ROOMS

QUANTITY: 4

LOCATION- House Production Office - Main Level Stage Right (35' x 23')

Tour Production Office - Main Level Stage Left (35' x 23')

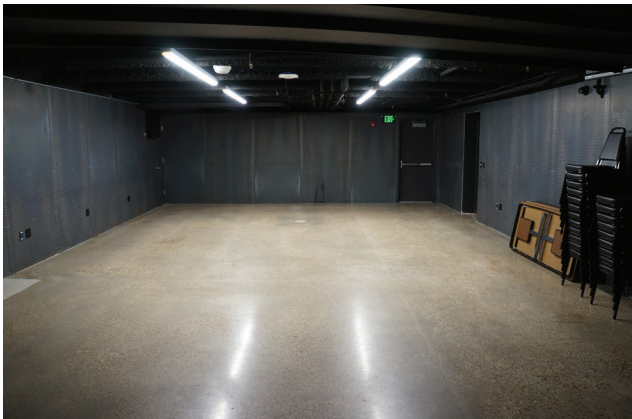
Crew Room - Lower Level Stage Left (15' x 13') (showers and lounge)

Catering Room - Lower Level Stage Left (35' x 35')

AMENITIES- Hardwired and Wireless Internet

Production Network Internet Name: Production (see password note in room)

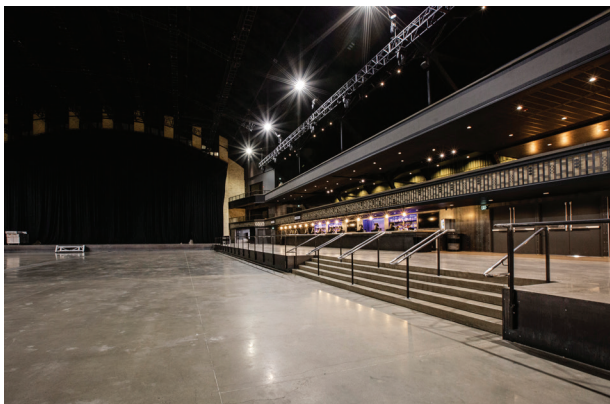
*NOTE- Dressing room access is through these areas.*



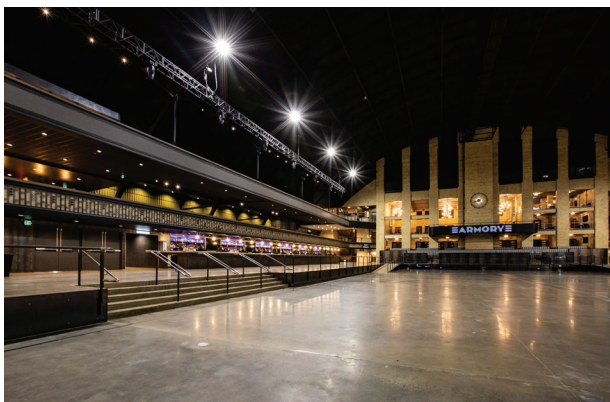
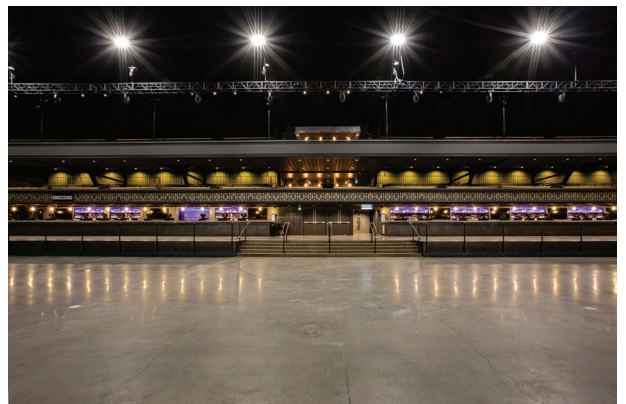
House Production Room Stage Right



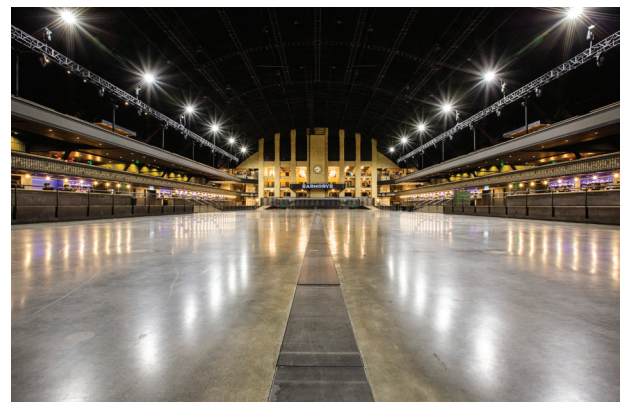
Tour Production Room Stage Left



Main Floor  
Tier 1  
Tier 2



Lower Bowl



Lower Bowl View



# AUDIO EQUIPMENT

State of the art audio systems are available for rental along with the finest engineers. Packages are available for corporate meetings, galas, trade shows, concerts and more.

***Please inquire on specific needs as many other products are available:***

## **High End Enclosures:** (System design based on the event)

L-Acoustics K2  
L-Acoustics KARA  
L-Acoustics KUDO  
L-Acoustics KIVA2  
L-Acoustics ARC2  
L-Acoustics DVDOSC

## **Monitor / Fill Enclosures:**

L-Acoustics 115HiQ  
L-Acoustics 112xt  
L-Acoustics 8xt  
L-Acoustics MTD108  
L-Acoustics 108P

## **Subwoofers:**

L-Acoustics SB28  
L-Acoustics SB18  
L-Acoustics SB15M  
L-Acoustics DVSUB

## **Amplification:**

L-Acoustics LA12X  
L-Acoustics LA8

## **Consoles:**

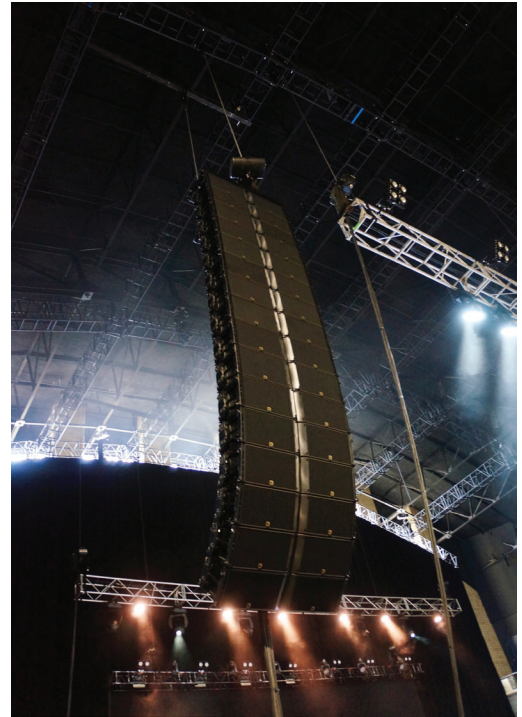
Avid Profile Systems  
Digico  
SSL  
Yamaha

## **Wireless Microphones:**

Shure ULXD  
Shure UHFR  
Sennheiser EW500

## **Intercom:**

HME Wireless System  
FreespeakII Wireless system  
Clear Com Wired system



• All snakes, cabling, distribution and rigging also to be provided.

# LIGHTING EQUIPMENT

State of the art lighting systems are available for rental along with the finest engineers. Packages are available for corporate meetings, galas, trade shows, concerts and more.

***Please inquire on specific needs as many other products are available:***

## CONSOLES:

Grand MA2

ETC

High End Systems

## MOVING FIXTURES:

Vari-lite VL4000Spot Luminaire

Vari-lite VL3500Spot Luminaire

Vari-lite VL500Wash Luminaire

Vari-lite VL3015Spot Luminaire

Ayrton GHIBLI LED Spot Luminaire

Clay Paky Mytho2 Hybrid Light

Chauvet 230SR Beam Fixture

Martin Quantum Wash

Martin Mac Aura

Martin Mac101



## CONVENTIONAL LIGHTING:

ETC Source 4par

ETC Source 4 Leko

10deg

19deg

26deg

26deg

50deg

Thomas Blinders

2- Lite

4- Lite

8- Lite

9- Lite

4-Lite ACL Lights

Altman Cyc Lights

## GOBO:

•Custom and stock gobo available for purchase

## SPOTLIGHT:

4-Lycian 1.2K

## LED LIGHTING:

ChormaQ Colorforce12"

ChormaQ Colorforce72"

Astera AX5 Battery Powered LED

Pulsar Chromabatten 48'

## STROBES:

Atomic 3k

Clay Packy Stormy

GLP JDC1

## ATMOSPHERIC / EFFECTS:

Cryo Jets (DMX Controlled)

Mirror Balls

Fiber Back Drops

High End F100 Fogger

Unique2 Hazer

Sparkular Cold Spark Fountain

Wildfire UV Lighting

• All snakes, cabling, distribution and rigging also to be provided.



# VIDEO EQUIPMENT

State of the art video systems are available for rental along with the finest engineers. Packages are available for corporate meetings, galas, trade shows, concerts and more.

***Please inquire on specific needs as many other products are available:***

## **SWITCHERS:**

Christie Spyder X20  
FOR A HVS-100  
FOR A HVS-110  
BARCO PDS-902

## **PROJECTORS:**

CHRISTIE Boxer 30k 4k resolution  
CHRISTIE Roadster 20k  
CHRISTIE M-Series 14k  
CHRISTIE M-Series 10k

## **SCREENS:**

6'11" X 12'2"  
7'11" X 14'  
9' X 16'  
11'3" X 20'  
13'5" X 24'  
15' X 26'9"  
15' X 45'  
17' X 40'  
18' X 32'  
27' X 48'

## **CAMERA KITS and Lenses:**

Sony HD HXC100-CCU, Remote,  
Tripod, Triax  
Grass Valley  
LDX80 Premiere HD Broadcast Camera  
Fujinon 36xlens, Fujinon 42xlens  
Fujinon 50xlens, Fujinon 77xlens

## **PLAYBACK and RECORD:**

PlayBack Pro Kit (w/MacBook Pro & Enabler Key)  
Millumen Playback / Video Mapping  
Pandoras Box - R3 SERVER QUAD PRO 4DVI - SSD  
Watchout System by Dataton

Sound Devices Pix 260i Production Video Recorder  
Sound Devices Pix 270i Production Video Recorder  
AJA Ki Pro Recorder

## **LED WALL:**

Absen A2 Pro Indoor Ultra HD LED Tile  
Square V - V3 - 3.9mm Indoor LED Panel  
Coleder 4.8mm tiles

## **COMPUTERS:**

MacBook Pro  
Dell Precision 5510 Workstation laptop  
Dell Latitude E5570 laptop



## **SCREEN RESOLUTIONS:**

### **6TH STREET OUTSIDE FRONT BOARDS**

800 x 320  
.JPG file made at 300dpi

### **5TH STREET OUTSIDE BACK BOARDS**

480 x 240  
.JPG file made at 300dpi

## **INTERIOR TVS RES**

3840 x 2160 (1920 X 1080 will work if needed)  
.JPG file made at 300dpi

## **INTERIOR RIBBON BOARDS**

11108 x 108 (Actual) (2/3 room to full room)  
5554 x 54 (half room size)  
.MOV file

• All snakes, cabling, distribution and rigging also to be provided.

# ARMORY

# STAGING EQUIPMENT

*Stage size for rental to suit any client needs.*

176 - staging dimensions 4' x 8' decks  
33 - Frames  
20 - 8' handrail  
8 - 4' handrail  
5 - 8' (7 step) stair cases with handrail  
2 - 5' (4 step) stair cases with hand rail  
1 - 1' step  
18- 4' blow-through barricade

60 - 6"-8" legs  
52 - 10"-12" legs  
34 -14"-16" legs  
200 - 22"-24" Legs  
  
22 - single peg rolling riser wheels  
13 - dual peg rolling riser wheels  
  
6 - 3' x 25' stage skirt

# RIGGING AND POWER EQUIPMENT

*Available For Rental*

## MOTORS

1 ton CM Chain Hoist  
1/2 ton CM Chain Hoist

## DISTRIBUTION

Motion Labs  
Lex  
Feeder and Power Cable

## SUB GRID

Specifications on Page 13,14

# ELECTRICAL

STAGE Right POWER:

[All CAM CONNECTIONS with Ground and Neutral Straight]

1- 400amp 3phase 208  
1- 200amp 3phase 208  
1- 200amp 3phase 208 [ISOLATED]

STAGE Left POWER:

[All CAM CONNECTIONS with Ground and Neutral Straight]

1- 400amp 3phase 208  
1- 200amp 3phase 208  
1- 200amp 3phase 208 [ISOLATED]

4- Shore Power Receptacles  
125/208volt, 50 amp Nema 14-50

Power Distances

- Full House 75'  
- 2/3 house 100'  
- 1/2 house 150'



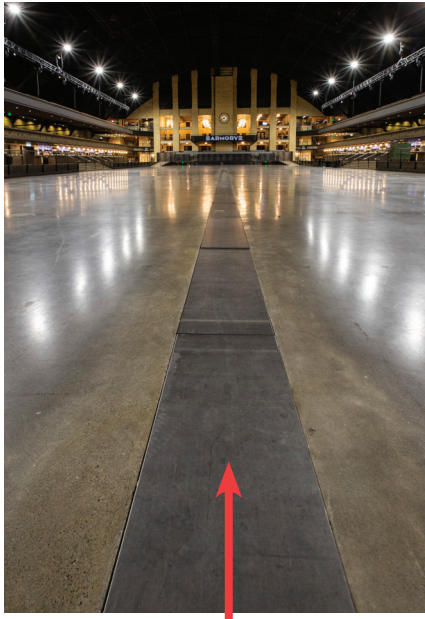
Doghouse For Feeder  
Pass Through



Power Cam Out



# FOH CABLE TROUGH



Removable Steel Plates  
**DO NOT DRIVE LIFT OVER**

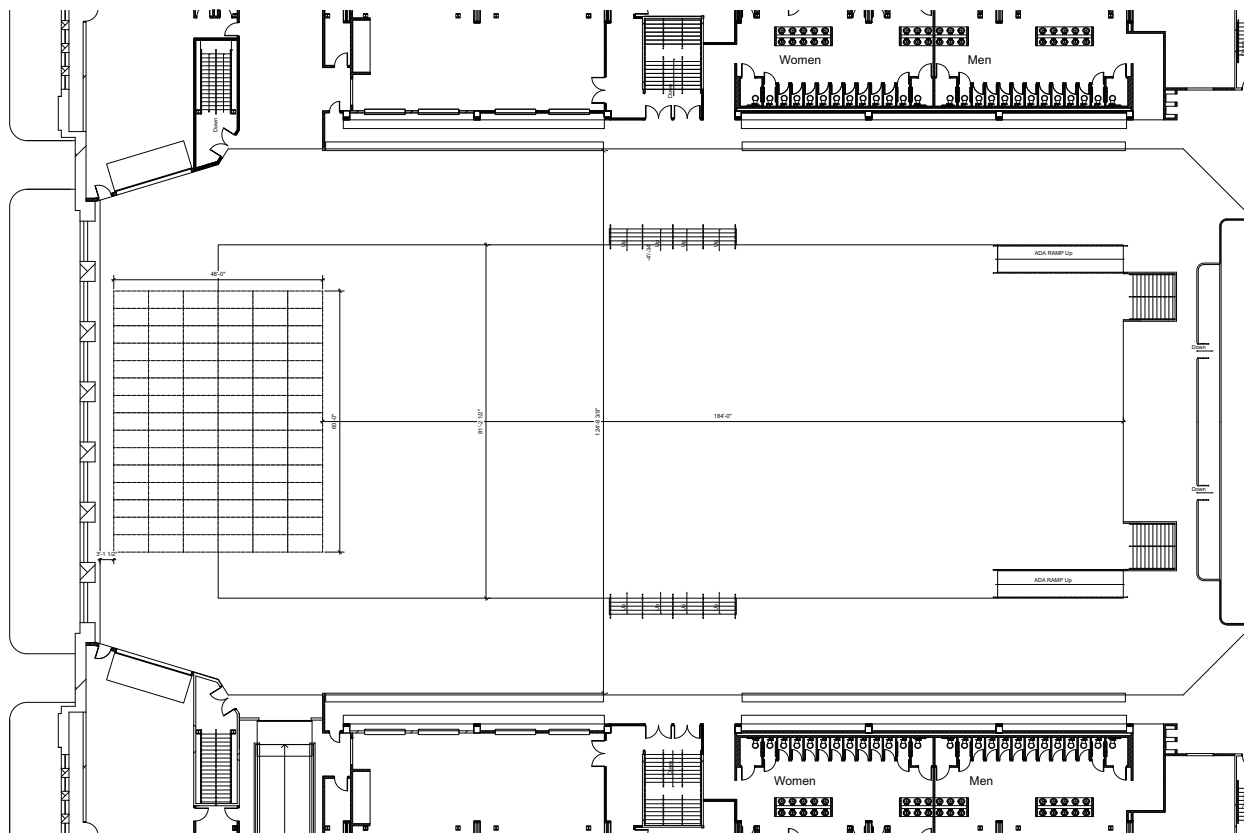
# HEAVY MACHINERY

- 1 - 70' lift \* must be operated by in house rigging provider
- 1 - pallet jack
- 1 - 2100 lb fork lift

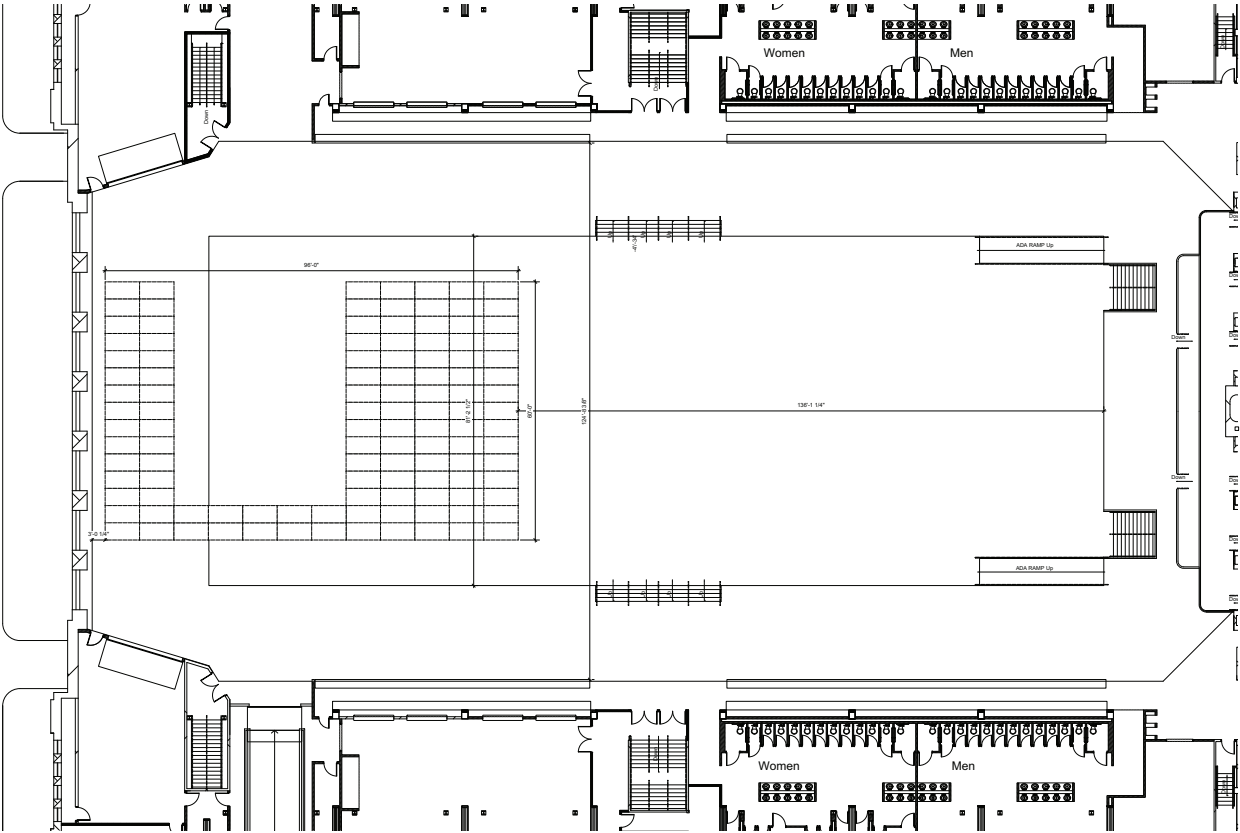
# MISC

- 10 - pieces of bike rack no cover
- 40 - bike rack with covers
- 220' - P&D
- 165 - padded Chairs
- 23 - 6' tables
- 3 - 8' tables
- 50 - stantions
- 3000 - banquet chairs
- 12 - 8' bars

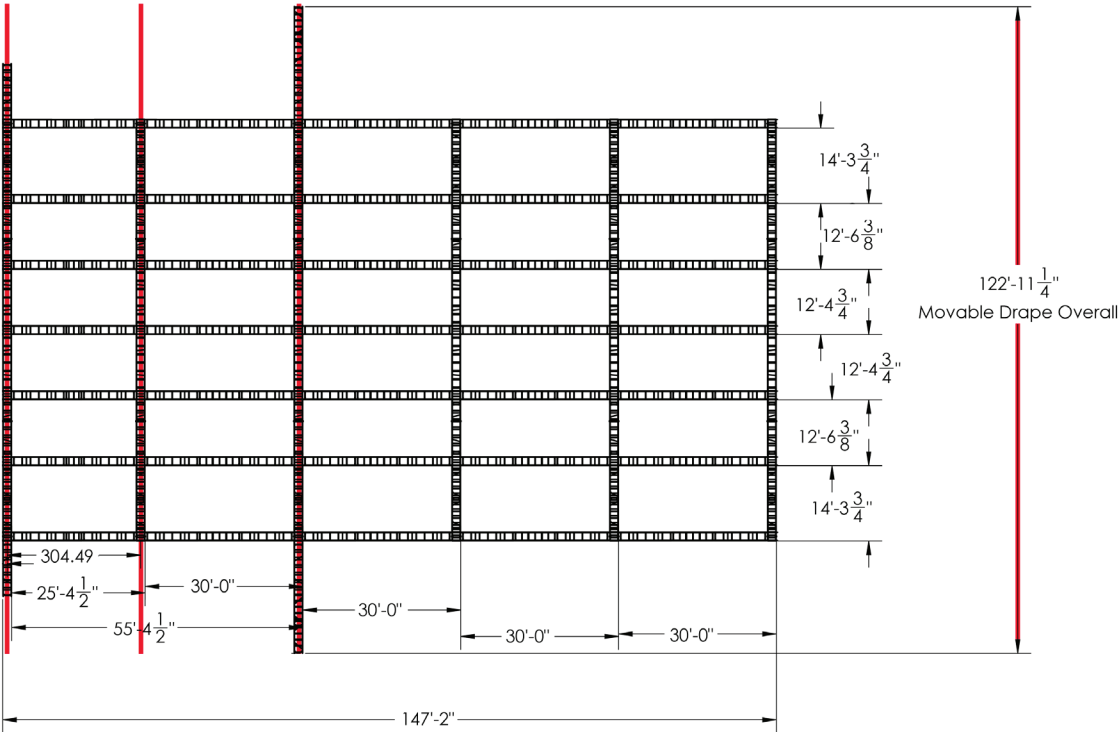
# FULL HOUSE (diagram) 60' x 40'



# 2/3 HOUSE (diagram) 60' x 40'



## DRAPE OPTIONS (3)



DRAWINGS AND MEASUREMENTS AVAILABLE UPON REQUEST.



# RIGGING

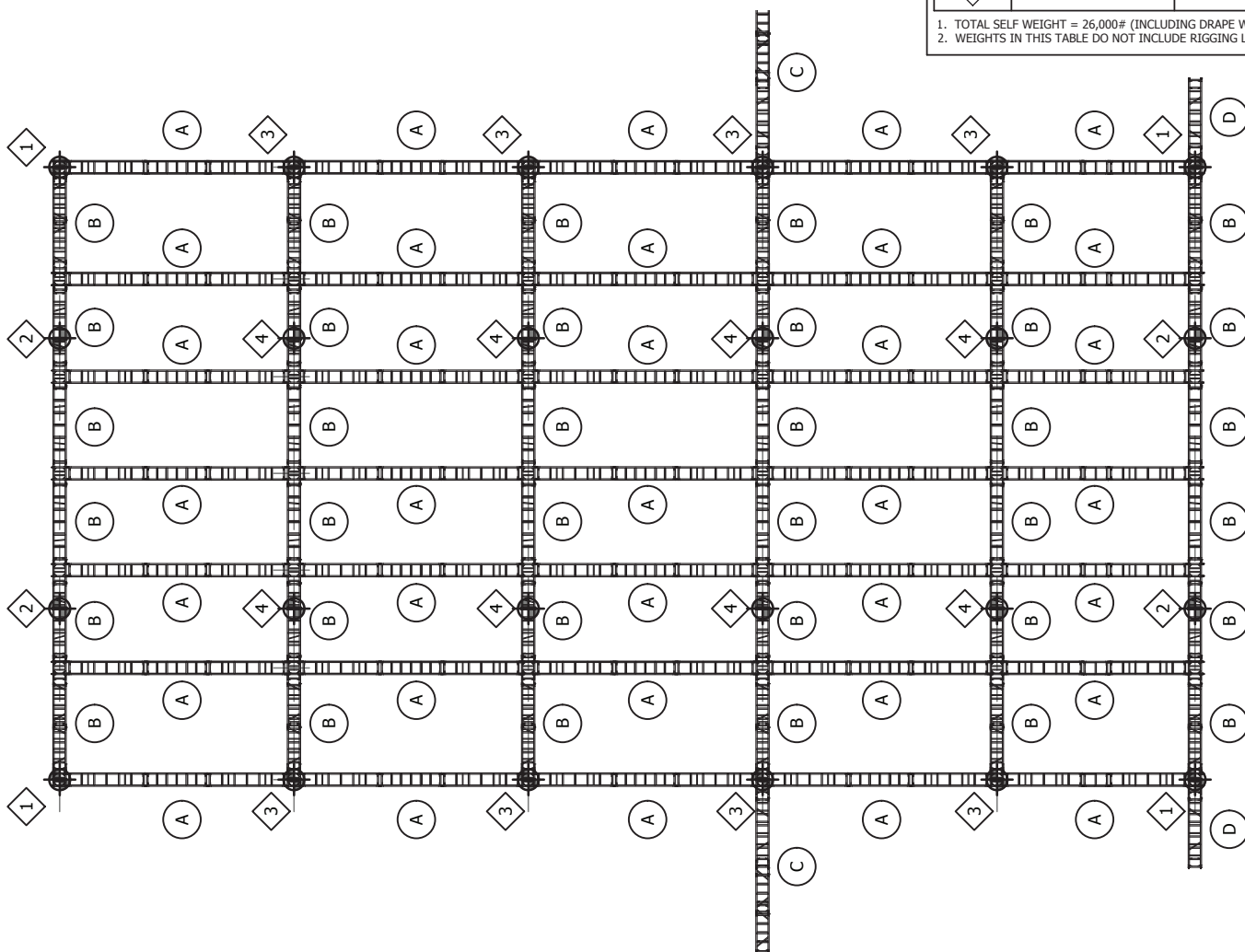
Center Bowl - 69' high steel / 63' low steel

edge of the bowl - 63' High steel / 52' low steel

next to balcony on upper bowl - 52' High steel / 44' low steel

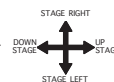
SELF WEIGHT REACTIONS		
MARK	WITHOUT DRAPE WING	WITH DRAPE WING
1	320#	720#
2	870#	870#
3	545#	945#
4	1,515#	1,515#

1. TOTAL SELF WEIGHT = 26,000# (INCLUDING DRAPE WINGS)  
2. WEIGHTS IN THIS TABLE DO NOT INCLUDE RIGGING LOADS



**ALLOWABLE LOADING PLAN**  
1/16" = 1'-0"

⊕ INDICATES TRUSS HANGER LOCATION. OVERALL LOAD SHALL NOT EXCEED 4,000# (INCLUDING SELF WEIGHT OF TRUSS)



## ALLOWABLE TRUSS CAPACITY

TRUSS SPAN	UNIFORMLY DISTRIBUTED LOAD	CENTER POINT LOAD	THIRD POINT LOAD	QUARTER POINT LOAD
A	350 PLF	5,000#	3,600#	2,800#
B	1,400 PLF	8,000#	5,000#	4,000#
C	155 PLF	-	-	-
D	350 PLF	-	-	-

NOTE: ALLOWABLE LOADING OF TRUSS WILL BE GOVERNED BY RIGGING LOAD AT EACH TRUSS HANGER AND SHALL NOT EXCEED 4,000# (INCLUDING SELF WEIGHT OF TRUSS)

## ALLOWABLE LOADING GUIDELINES

- EACH LOAD CASE INDICATED IN THE TABLE IS INDEPENDENT OF THE OTHER LOADS. MULTIPLE LOAD CASES MAY NOT BE APPLIED SIMULTANEOUSLY TO THE SAME TRUSS.
- CARE SHOULD BE TAKEN WHEN APPLYING LOADS AS LOADING OF ONE TRUSS MAY INDUCE LOAD ON ANOTHER TRUSS RESULTING IN AN OVERLOAD SITUATION.
- THE UNIFORMLY DISTRIBUTED LOAD IS ONLY APPLICABLE IF THE LOAD IS APPLIED EVENLY OVER THE ENTIRE LENGTH OF THE TRUSS.
- SELFWEIGHT OF THE TRUSS HAS BEEN INCLUDED IN THE CALCULATION OF THE ALLOWABLE LOADS.
- ALL LOADS SHALL BE APPLIED AT TRUSS PANEL POINTS ONLY, I.E. INTERSECTION OF DIAGONAL AND CHORD OR VERTICAL AND CHORD.
- BRIDLES ARE NOT PERMITTED UNLESS APPROVED IN WRITING BY THE ENGINEER OF RECORD.
- ALLOWABLE LOADS INDICATED ARE FOR GENERAL GUIDANCE ONLY. ALL RIGGING PLOTS SHOULD BE EVALUATED BY A LICENSED STRUCTURAL ENGINEER PRIOR TO HANGING ANY RIGGING LOADS.
- NO DYNAMIC OR SHOCK LOADS HAVE BEEN TAKEN INTO ACCOUNT.
- RIGGING LOAD SHALL NOT EXCEED 4,000# AT EACH TRUSS HANGER (INCLUDING SELF WEIGHT)
- MAXIMUM OVERALL RIGGING LOAD SHALL NOT EXCEED 96,000# - 26,000# SELF WEIGHT = 70,000#
- BUILDING EOR TO VERIFY LOADING CRITERIA IS STRUCTURAL ACCEPTABLE WITHIN THE FOOTPRINT OF THE BUILDING

